

# WorldChem

## Versatile range of cleaning and sanitising systems

Versatile range of cleaning and sanitising systems offering outstanding value with a cleaning performance second to none – and maximum benefit from the cleaning product.

WorldChem is ideal for use in all heavy duty cleaning applications in food processing, restaurant kitchens, hospitals, abattoirs, dairies, vehicle washing.

- 1 or 2 products, with rinse facility
- Fully approved chemical backflow protection meets EN1717
- Supplied with the unique patented Hydro Multi-Function Gun
- Range of other Foam/Spray guns available
- Retractable hose reel option
- Compressed Air injection option for richer foam
- Chemical container racks included
- Integrated hose holder
- Supplied ready-to-use



often Used



schools  
universities



fast food



fine dining



hotels  
& lodging



healthcare



food retail



transportation



carwash &  
auto detailing

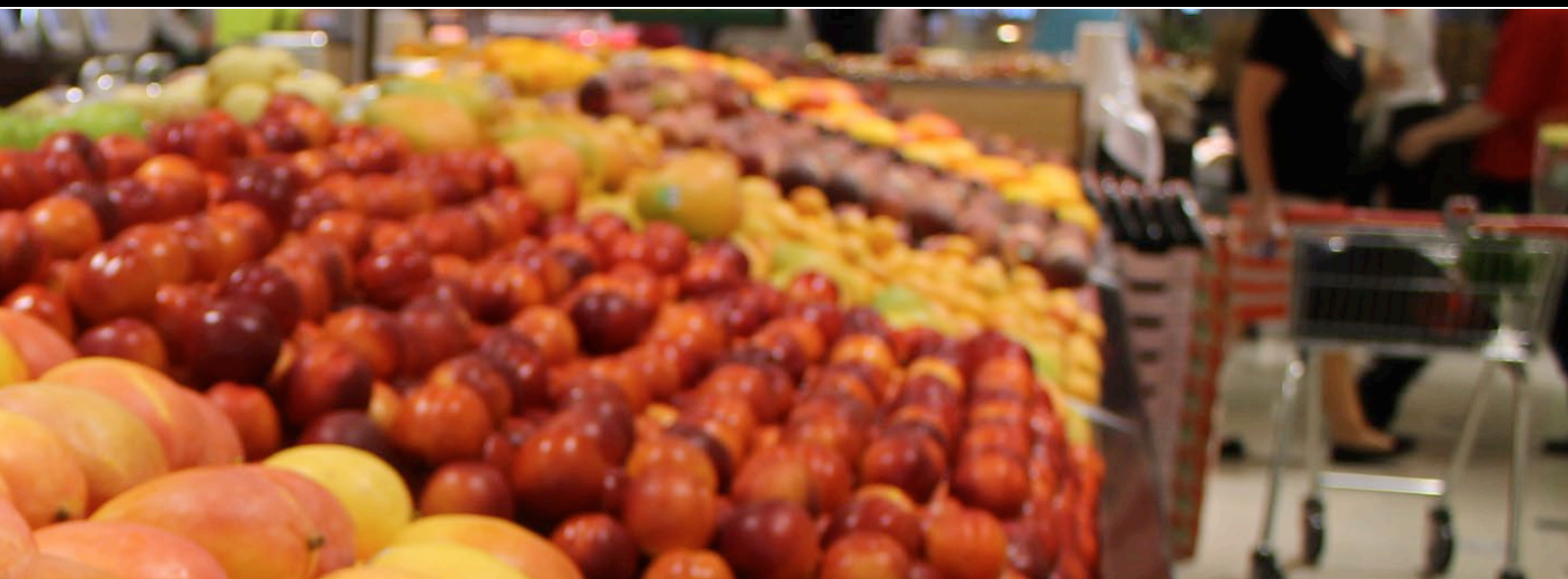


food  
processing



pet care

# Further Information



| Model   | Products | Back flow protection | Hose | Max flow rates lit./min. Product / rinse | Approx. Dilution range H2O:Chem.(3 Bar, 1.0cp) |
|---|----------|----------------------|------|--|--|
| <b>Models, supplied without hoses, racks or Gun</b>                                     |          |                      |      |  |  |
| 948GBD  | 1        | Double               |      | 10 / 18                                  | 10:1 to 500:1                                  |
| 949GBD  | 2        | Double               |      | 10 / 18                                  | 10:1 to 500:1                                  |
| <b>Models, complete with hoses, racks and multi-function Gun</b>                        |          |                      |      |  |  |
| 958GBD  | 1        | Double               | 15m. | 10 / 18                                  | 10:1 to 500:1                                  |
| 958GBD20  | 1        | Double               | 20m. | 10 / 18                                  | 10:1 to 500:1                                  |
| 958GBT  | 1        | Triple (BA)          | 15m. | 10 / 18                                  | 10:1 to 500:1                                  |
| 959GBD  | 2        | Double               | 15m. | 10 / 18                                  | 10:1 to 500:1                                  |
| 959GBD20  | 2        | Double               | 20m. | 10 / 18                                  | 10:1 to 500:1                                  |
| 959GBT  | 2        | Triple (BA)          | 15m. | 10 / 18                                  | 10:1 to 500:1                                  |
| <b>Models, complete with hoses, racks, multi-function Gun and Retractable Hose Reel</b> |          |                      |      |  |  |
| 959GBDR   | 2        | Double               | 15m. | 10 / 18                                  | 10:1 to 500:1                                  |
| 959GBTR   | 2        | Triple (BA)          | 15m. | 10 / 18                                  | 10:1 to 500:1                                  |